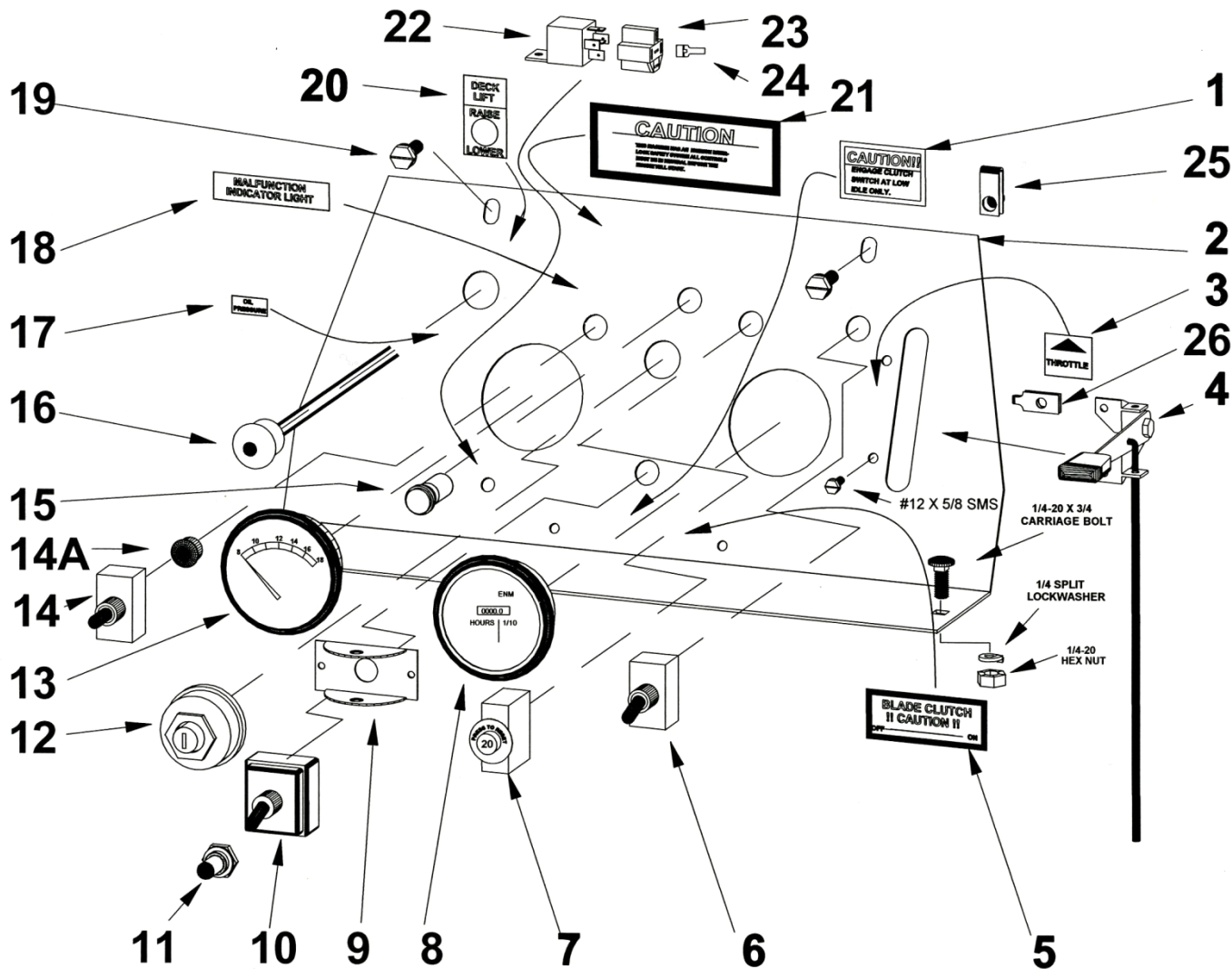
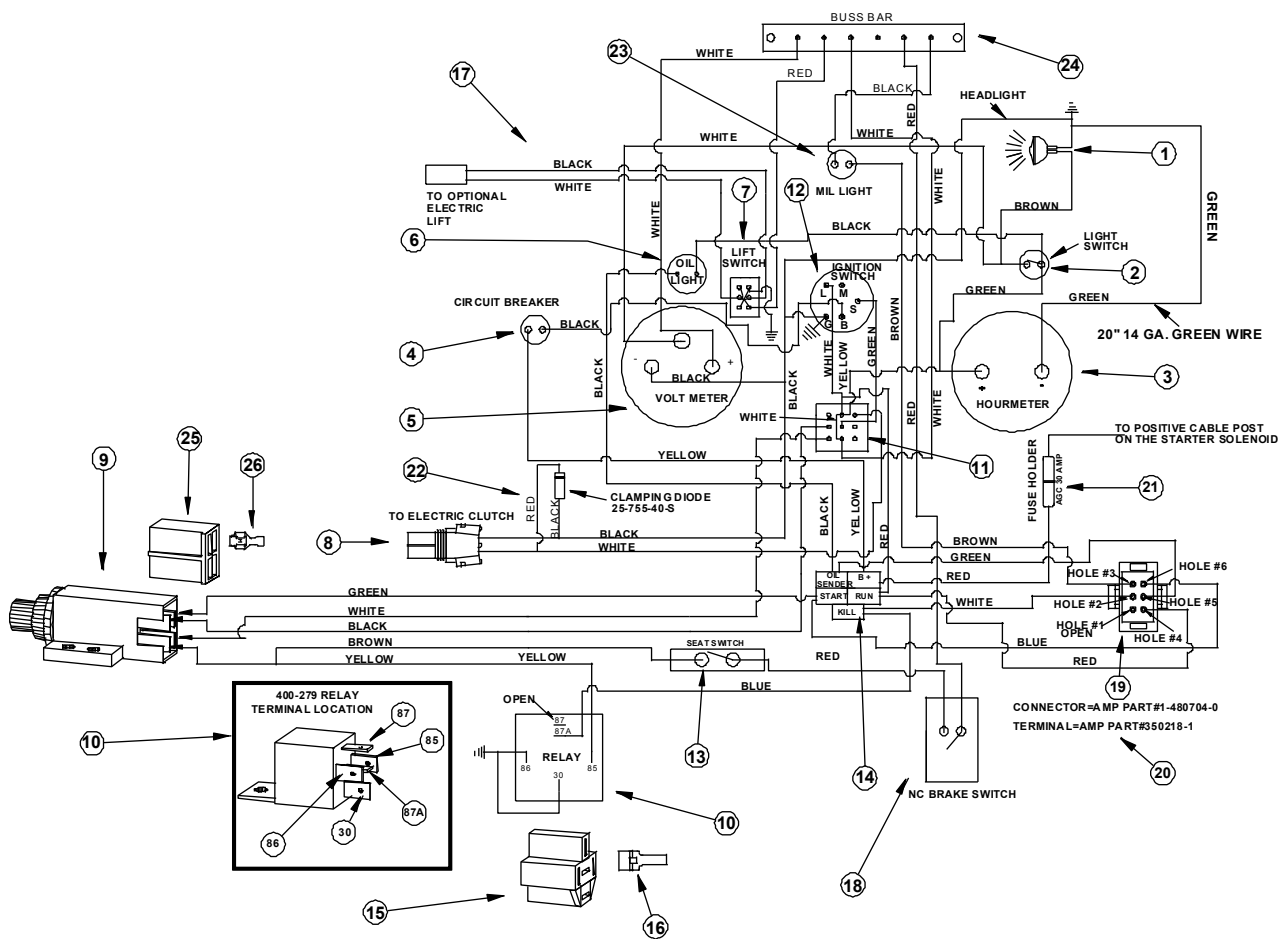


D-2500 EFI DASH ASSEMBLY



REF#	PART#	DESCRIPTION	QUANTITY
1	400-790	CLUTCH WARN DECAL	1
2	100-405	DASH PANEL	1
3	400-713	THROTTLE DECAL	1
4	400-892	THROTTLE CONTROL CABLE	1
5	400-785	ELECTRIC CLUTCH DECAL	1
6	100-118	LIGHT SWITCH	1
7	900-802	CIRCUIT BREAKER	1
8	100-122	HOUR METER	1
9	400-695	SWITCH GUARD	1
10	400-674	E. C. SWITCH	1
11	400-658	SWITCH BOOT (1 USED ON 18 HP MODELS, 2 ON 20HP MODELS)	1
12	100-113R	IGNITION SWITCH	1
13	400-273	AMMETER	1
14	400-659	LIFT SWITCH (20 HP, 23 HP, & 25 HP EFI MODEL)	1
14A	400-980	HOLE PLUG (18 HP MODELS)	1
15	25-352-19-S	MALFUNCTION INDICATOR LIGHT	1
16	100-125	OIL PRESSURE LIGHT	1
17	400-737	OIL PRESSURE DECAL	1
18	400-657	MALFUNCTION DECAL	1
19	300-581	1/4-20 X 3/4 SELF TAPPING SCREW	2
20	400-788	ELECTRIC LIFT DECAL	1
21	400-711	INTERLOCK DECAL	1
22	400-279	RELAY	1
23	400-280	CONNECTOR	1
24	400-281	TERMINAL ENDS	4
25	300-435	1/4" FENDER NUT	2
26	300-438	3/16" FENDER NUT	3

EFI WIRING HARNESS



REF#	PART#	DESCRIPTION	QTY.
1	100-110	HEADLIGHT	1
2	100118	LIGHT SWITCH	1
3	100-122	HOURMETER	1
4	900-802	CICUIT BREAKER	1
5	400-273	VOLTMETER	1
6	100-125	OIL PRESSURE LIGHT	1
7	400-659	LIFT SWITCH	1
8	500-560	CLUTCH PLUG	1
	500-561	CLUTCH PLUG TERMINALS	2
9	400-278A	DPST SWITCH	1
10	400-279	RELAY	1
11	400-674	ELECTRIC CLUTCH SWITCH	1
12	100-113R	IGNITION SWITCH	1
13	400-292A	SEAT SWITCH	1
14	25-155-06	CONNECTOR PLUG	1
15	400-280	RELAY CONNECTOR PLUG	1
16	400-281	RELAY CONNECTOR TERMINALS	4
17	100-310A	ELEC. LIFT HARNESS	1
18	100-569	BRAKE SWITCH	1
19	400-282	CONNECTOR PLUG	1
20	400-283	CONNECTOR TERMINALS	5
21	400-463	FUSE HOLDER	1
22	25-755-40	CLAMPING DIODE	1
23	25-352-19-S	MALFUNCTION INDICATOR LIGHT	1
24	400-271	BUSS BAR	1
25	400-284	CONNECTOR	1
26	400-566	CONNECTOR TERMINAL ENDS	1
	2-EFI HARNESS CHG KIT	EFI WIRING HARNESS	1