

Deines
Manufacturing
Corporation

Home Office
P.O. Box 737
Hays, Kansas 67601

Manufacturing Plant
Highway 4 • P.O. Box 266
Ranson, Kansas 67572
(913) 731-2271

1800 SERIES

KT w/o clutch.

Volume 1800-02

**PARTS, MAINTENANCE
& OPERATION MANUAL**

**DECK PARTS LISTED IN
SEPARATE SUPPLEMENT**

SAFETY OPERATING PRECAUTIONS

WARNING READ ENGINE OPERATING MANUAL BEFORE STARTING ENGINE

1. Remove stones, wires, cans, boards, branches, bones and other foreign objects FROM THE AREA BEFORE EACH MOWING. Avoid striking rocks or roots. Any of the above, if struck by the mower may be thrown, causing injury to people, property, or to the mower.
2. Place mower drive control levers in neutral and mower clutch handle in neutral or disengaged position before starting engine. (The mower will not start due to safety switches unless the above is adhered to).
3. Never place hands or feet under cutting head while motor is running.
4. Never fill the fuel tank while the engine is hot, and wipe off any gasoline that might have spilled. Replace fuel cap on tank.
5. Only persons thoroughly acquainted with rules of safety operation should be permitted to use mower. Never allow a small child to operate or be in the operating area of power equipment.
6. Do not attempt to get off or on mower when mower is engaged and motor is running. Wait until mower blades stop turning before getting on or off mower. Make sure clutch handle is in neutral or disengaged before parking mower.
7. Keep blades sharp and properly balanced. If your equipment should start vibrating, stop the engine and check for damaged or loose parts. Vibration is generally a warning of trouble.
8. When putting on new blades, put on new spring washer and lock nut. Check lock nut at frequent intervals making sure they are tight.
9. Always keep hands, feet, loose clothing, and other objects away as there is danger of tipping over.
10. Do not attempt to clean housing or to otherwise clean, adjust, or repair machine before stopping mower engine, disconnecting the spark plug cable, and blade engage lever is in disengaged position.
11. Never leave machine running unattended, and remove key from ignition switch to prevent children from starting mower.
12. Always keep all shields and guards in place. Mower must never be operated with any shield or guard removed.
13. Never run engine inside a building without opening all doors and windows.
14. Keep persons away from mowing area. Although area has been supposedly cleared of foreign objects, small objects may have been overlooked and may be discharged or thrown by moving parts.
15. Always drive slowly over unseen ground, on hills and curves to prevent tipping of mower.
16. Do not operate the mower at high speed going down hill, and do not turn sharp corners while going down hill. NOTE: The transmissions produce considerable braking action when engine is throttled back at idling speed, and this procedure is recommended for applying braking action.
17. Do not operate mower on crossways or on inclines which have a greater than 25% slope. A 25% slope is a 2½ foot rise every 10 feet. Do not operate mower going up or down hill if slope is greater than 35%.



In addition to the above safety procedures for operation of the Marty "J" the following precautions should be observed when using gasoline. It's improper use, handling, and storage can be dangerous.

Remember:

- Always use an approved container.
- Place container out of reach of children.
- Never add gasoline to a running or hot engine. Fill tank out of doors and wipe up spilled gasoline.
- Use gasoline only as a fuel — Never as a cleaner.
- And positively NO SMOKING.

TABLE OF CONTENTS

TITLE	PAGE NO.
Safety operating precautions	cover
How to order parts	2
Controls	3
Operation	4
Tractor maintenance	5-7
Deck maintenance	8
Maintenance	9
Adjustments	9-10
Cautions	11-12
Decals	13
Base assembly	15
Engine assembly	16
Dash Assembly	17
Body Assembly	18-19
Wiring Schematic	20
Deck and Parts List	Supplement
Optional Parts	Supplement

HOW TO ORDER PARTS

Each available part has been given a key number, which is used only as a reference in locating the part number, description, and quantity in the list which follows each "exploded view." This key number is not a part number, do not use it when ordering parts.

WHEN ORDERING PARTS, FOLLOW THE INSTRUCTIONS LISTED BELOW, BY DOING SO, YOU WILL BE ASSURED OF RECEIVING THE CORRECT PART IN THE SHORTEST TIME.

1. Give the serial number and model number of your unit.
2. Write the complete part number and the description of the part.
3. Whenever the terms LEFT or RIGHT, FRONT or REAR are used herein it should be understood to mean the position normally assumed while operating the machine, (except where otherwise noted).
4. Give detailed shipping instructions — that is: by truck, bus, rail, parcel post, UPS, etc.
5. Place your order with the Dealer nearest you. Write your Dealers name below so you will have it for a quick reference:

Name _____

Address _____

City, St. _____

Phone _____

Deines Corporation reserves the right to void any warranty when original factory specified replacement parts are not used.

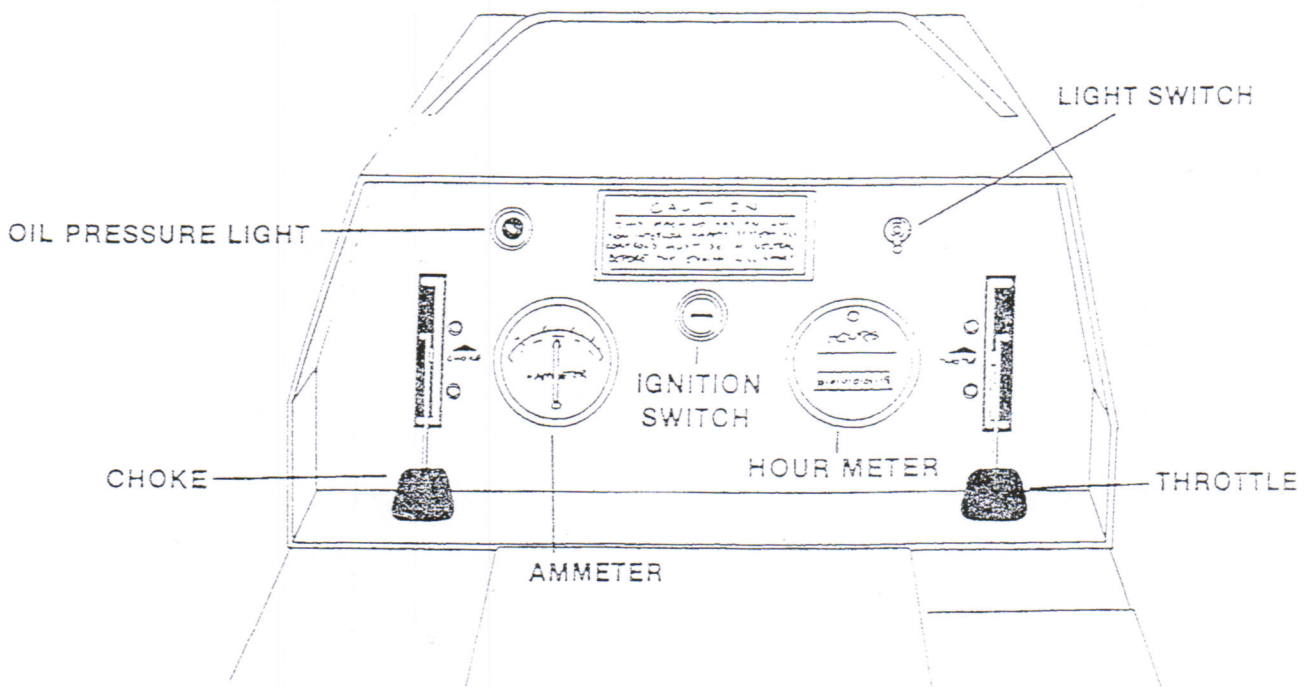
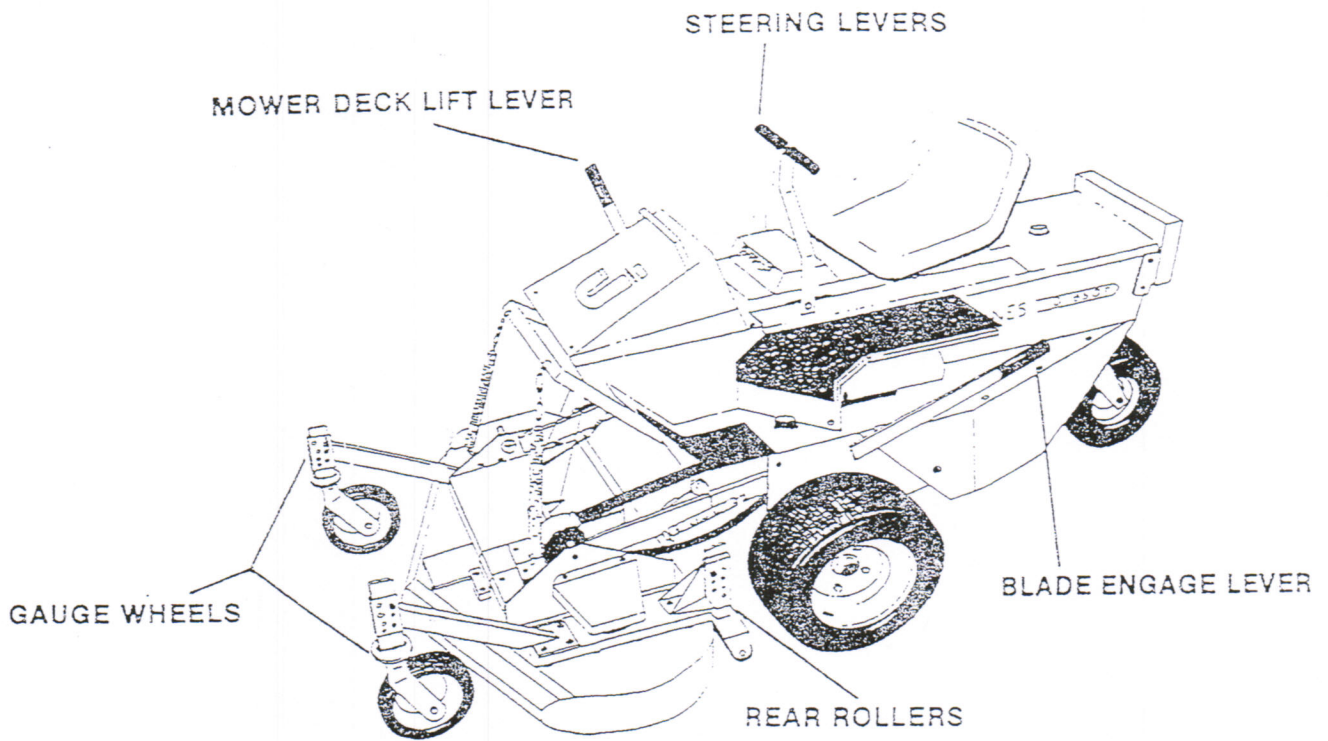
Deines Corporation is continually striving to improve its products.

We must therefore reserve the rights to make improvements, or changes, when it becomes practical to do so, without incurring any obligation to make changes or additions, to the equipment sold previously.

HARDWARE KEY

Throughout this operation and parts manual you will find common hardware such as bolts, nuts, and washers, illustrated or not illustrated. The service part immediately preceding a hardware listing is the part using these particular items for mounting purposes or installation. This hardware is not included with parts or assembly when ordering as a replacement.

CONTROLS



OPERATION

OPERATING PROCEDURES

All models of the Marty-J Mowers are fully assembled and tested at the Deines Corporation factory to be free from defects in workmanship and material. The Marty-J will give you many trouble free years of operation when you follow the service and maintenance procedures provided in this PARTS, MAINTENANCE AND OPERATION MANUAL.

NOTE: FOLLOW DIRECTIONS AND SAFETY PRECAUTION DECALS THAT ARE ON THE MOWER.

STEERING

Each steering arm independently controls the direction of the corresponding front drive wheel, both forward and reverse. In neutral the wheel is locked. The further the drive lever is moved, the faster the wheel turns. Consequently an indefinite range of speed is available from 0 to 5½ miles per hour, forward or reverse. Therefore the steering arm serves as a speed control, braking system and a steering wheel.

ENGAGING & DISENGAGING DECK

SET ENGINE SPEED TO ABOUT HALF THROTTLE BEFORE ENGAGING BLADE CLUTCH DRIVE HANDLE. Pull mower blade clutch arm over center. After mower is engaged, set throttle from 2600 to 3200 RPM.

PLACE THROTTLE AT LOW IDLE BEFORE DISENGAGING BLADE CLUTCH DRIVE HANDLE.

CAUTION: NEVER ENGAGE BLADE DRIVE OR MOWER EXCEPT WHEN SITTING ON SEAT. KEEP HANDS AND FEET FROM BENEATH MOWER AND DECK.

If engine pulls down, return the steering levers closer to neutral. In extremely heavy cutting, it may be necessary to use the slowest speed and take a narrower cut. Your Marty-J is unique in that the speed of the mower is not related to the speed of the blades. Since very little power is needed to propel the mower you receive the greatest efficiency out of the mower deck.

Normal cutting height is from 1 to 4 inches. Height of the cut is adjusted by means of raising or lowering the rollers or gauge wheels.

Make right hand turns for cutting normal height grass. This way the clippings are chopped up finer. The last cut can be raked or swept up eliminating cleaning the entire yard. In tall grass or weeds, make left turns so grass or weeds are discharged on the cut area. This is necessary so that clippings can discharge freely.



CLEAR THE AREA OF RUBBISH BEFORE MOWING . . .

DUMP VALVE OPERATION

In order to move the machine when the engine is not running, depress dump valves. The left transmission dump valve is located at the front-center of the transmission. The right transmission dump valve is located at the rear-center of the transmission. To dump, push in plunger with finger and flip clip over valve head.

TRACTOR MAINTENANCE

AREA OF MAINTENANCE	Check Hours	Change Hours	Oil, Grease or Clean Hrs	Capacity	NOTES
Kohler Engine Crankcase Oil	4	20		4 pts.	Above 32° F Below 32° F SAE 30 5W30 CAUTION: DO NOT overfill crankcase. DO NOT use DS Oil. DO NOT mix brands or grades of motor oil. Engine damage could result from mixing non-compatible oils.
Kohler Eng. Crankcase Filter		20			
Air Cleaner-Paper Element	4	20			Knock dust from element every 4 hours
Air Cleaner-Foam Precleaner	4	as needed			Clean Precleaner every 20 hours by washing in water and detergent. Remove excess by squeezing like a sponge and allow to dry thoroughly. Distribute three (3) tablespoons of SAE 30 engine oil evenly around the precleaner. Knead into and ring excess oil from precleaner. CAUTION — Never run engine with air cleaner removed.
Spark Plugs		100			Remove and replace.
Engine Base Area			8		Clean area of all debris. CAUTION — Never use a high pressure washer.
Hydrostat Reservoir	4			6 oz.	Use Ford Type F or Dexron Automatic Transmission Fluid. CAUTION — DO NOT let any particles fall in reservoir to cause contamination.
Hydrostatic Trans. Fans	4				Inspect to insure fan blades are intact. CAUTION — DO NOT run mower without fans, or broken fans.
Hydrostatic Trans Hoses	20				Inspect for leaks and poor connections.
New Machine — Hydrostatic Trans Belts	1				Inspect belt tension — Correct tension is when the belt can be deflected a maximum of ½ inch by a 10 pound force applied midway between the transmission pulley and engine pulley.
Used Machine — Hydrostatic Trans Belts	8				
Primary Drive Chains	8				This is the chain between the transmission sprocket and the idler sprocket. Proper tension is when the lower strand has ¼" of slack. Make this measurement when depressing the strand midway between the sprockets. Use normal finger pressure.
Secondary Drive Chains	8				This is the chain between the drive wheel sprocket and primary idler sprocket. Proper tension is when the lower strand has a ¼" to ½" of slack. Make the measurement as above.

TRACTOR MAINTENANCE

AREA OF MAINTENANCE	Check Hours	Change Hours	Oil, Grease or Clean Hrs	Capacity	NOTES
Drive Wheel Tires	8				Maintain an inflated pressure maximum of 22 PSI.
Tail Wheel Tires	8				Maintain an inflated pressure maximum of 14 PSI.
Battery	8				Check water level in each cell. The electrolyte (acid and water) in each cell should be at ring level at all times to prevent battery failure. When the electrolyte is below this level add pure, distilled water. Occasionally remove the battery cables and brighten the terminal contact surfaces with wire wool and reassemble them. Apply a light coat of vaseline or chassis lubricant. Be sure the terminals are clamped tightly and that the battery is fastened securely in the battery box. Replace unserviceable cables. Keep the vent holes in the battery filler caps open. Keeping the battery fully charged, not only adds to its life, but makes it available for instant use when needed.
Fuel Tank	4			5 gal.	First 25 hours use regular gas, thereafter use unleaded gas.
Fuel Shut Off Valve					At start of use be sure the shut off valve under the fuel tank is in the full open position. At the end of mowing be sure to shut off the valve under the fuel tank. CAUTION — When transporting on a trailer or when machine is not in use the fuel valve MUST be in the shut off position. This will prevent gasoline from gravity feeding into the engine crankcase. In the event of carburetor float malfunction.
Fuel Filter		100			Remove and replace.
Drive Wheels			200		Remove, clean bearings thoroughly and repack bearings with short fiber wheel bearing grease.
Tail Wheel			8		Use 2 strokes of a lubricator with multi purpose grease.
Deck Lift Lever Bushing			8		Use 1 stroke of a lubricator with multi purpose grease.
Clutch Lever Bushing			8		Use 1 stroke of a lubricator with multi purpose grease.
Tail Wheel Fork Pivot Bushing			8		Use 2 strokes of a lubricator with multi purpose grease.
Primary Idler Sprocket			8		Use 2 strokes of a lubricator with multi purpose grease.

TRACTOR MAINTENANCE

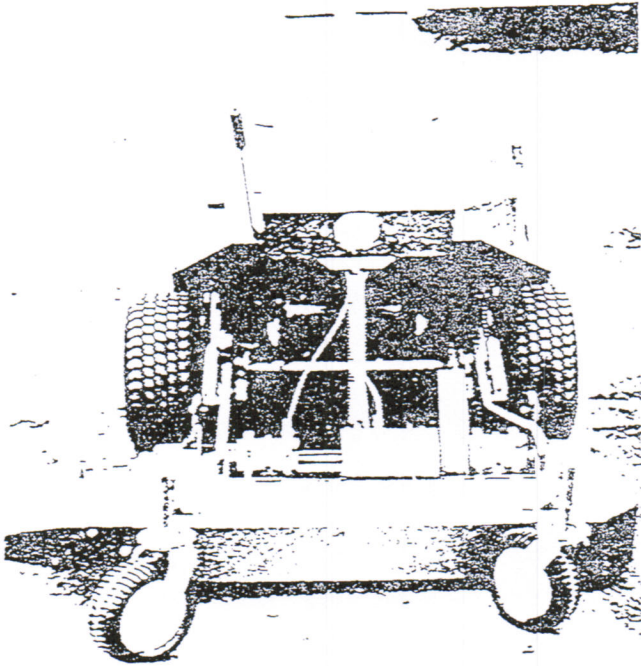
AREA OF MAINTENANCE	Check Hours	Change Hours	Oil, Grease or Clean Hrs	Capacity	NOTES
Front & Rear Pusharm Bolt			8		Use 1 stroke of a lubricator with multi purpose grease.
Primary & Final Drive Chains			4-8		In certain conditions oil attracts sand reducing chain life, therefore lubricate with silicone type lubricant.
Steering Lever Pivot Point			8		Oil with a penetrating oil lubricant.
NEW UNIT Deck Drive Belts & Transmission Drive Belts	1				Inspect belt tension. Correct tension is when the belt can be deflected a maximum of 1/2 inch when a 10 pound force is applied midway between the engine pulley and the gear box pulley on the deck.
USED UNIT Deck Drive Belts & Transmission Drive Belts	4				
					<p>CAUTION — NEVER STORE MOWER WITH FUEL IN TANK INDOORS OR IN ENCLOSED, POORLY VENTILATED ENCLOSURES, WHERE FUEL FUMES MAY REACH AN OPEN FLAME, SPARK OR PILOT LIGHT AS ON A FURNACE, WATER HEATER, CLOTHES DRYER, ETC. When storing for 30 days or more, prepare mower by maintaining all points. Run the engine until it reaches normal operating temperature. Turn off the fuel supply and run the engine until it stops. Drain oil from oil base while the engine is still warm. Refill with fresh crankcase oil and attach a tag stating viscosity used. Remove spark plugs. Pour 1 ounce (2 tablespoons) of rust inhibitor or SAE #50 oil into THE CYLINDERS. Crank the engine over a few times. Reinstall spark plugs. Service air cleaner. Clean governor linkage and protect by wrapping with a clean cloth. Plug exhaust outlet to prevent entrance of moisture, dirt, bugs, etc. Wipe entire unit. Coat rustable parts with a light film of grease or oil. Provide a suitable cover for the entire unit. Disconnect battery cables.</p> <p>REFER TO ENGINE OPERATOR'S MANUAL FOR COMPLETE ENGINE MAINTENANCE AND ADJUSTMENTS.</p>

DECK MAINTENANCE FOR ALL MODELS

AREA OF MAINTENANCE	Check Hours	Clean, Oil Grease Hrs.	NOTES
Gear Box — Curtis (Cylinder Shaped)	8		Check lubricant every 8 hours. Keep the lubricant up to the level plug on the side of the gear box at all times. If the unit needs lubricant remove the fill plug at the top and fill to the level plug with multi purpose grease.
Gear Box — Peerless (Square Shaped)	8		Check lubricant every 8 hours. Keep the gearbox approximately 1/2 full at all times. If the unit needs lubricant remove the fill plug at the top and fill to the level plug with multi purpose grease.
New Unit Deck Blade Drive Belt Used Unit Deck Blade Drive Belt	8		The best tension for a belt is the lowest tension at which the belts will not slip under the maximum load condition. Check the tension on a new machine every hour the first day of operation. Too much belt tension shortens belt and bearing life. If a V-belt slips tighten it by moving the idler pulley. A general rule for belt tension is to maintain 1/64" belt deflection per 1" span between pulleys with a 5 to 6 pound force.
Blade Spindle Housing		8	Use 4 strokes of a lubricator with multi purpose grease.
Castor Wheels on 40" and 50" Decks		8	Use 2 strokes of a lubricator with multi purpose grease.
Castor Tire on 48", 50", 60" & 72" Decks	8		Maintain an inflated pressure maximum of 22 PSI.
Front & Rear Pusharm Slide Point		8	Lubricate with a penetrating oil lubricant.
Castor Wheel Fork Adjustment Pin & Clip	4		Check clip in pin at least every-four hours to see that it is secure. This will prevent fork from coming loose and being run over by the cutting deck.
Underside of Deck Housing		8	Clean the underside of the deck housing after each use before clippings have a chance to dry out. Use water pressure from a garden hose and a wide bladed putty knife. A light coat of oil after cleaning is also beneficial. CAUTION: Never use a pressure washer and this may damage bearings in housings.
			CAUTION — When machine is stored for more than 30 days, be sure all points have been greased or oiled.

MAINTENANCE

EXPOSING MOWER DECK



CAUTION: NEVER RAISE DECK WITH ENGINE RUNNING.

To raise mower deck, place hand under center front of deck and raise deck and at the same time with the other hand push springs toward body until deck is in vertical position.

WARNING: BE SURE SPARK PLUG IS DISCONNECTED BEFORE RAISING DECK.

CLEANING MOWER

Water pressure from a garden hose can be used in cleaning underside of housing, if cleaned immediately after use before clippings under mower has a chance to dry out. This should be done whenever an accumulation of grass builds up under mower. Mower will do a better job of mowing if underside of mower deck is kept clean. A wide bladed putty knife also works well for cleaning grass and dirt accumulation. A light coat of oil after cleaning is also beneficial.

BLADE CARE

For best results, cutting blades must be kept sharp. The blade can be sharpened with a few strokes of a file, or on a grinding wheel.

DO NOT ATTEMPT TO SHARPEN WHILE ON MOWER

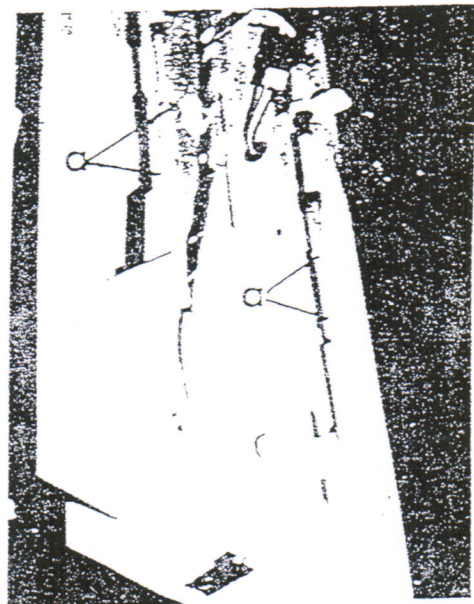
When grinding, care should be taken to maintain blade balance and the blade should be checked for proper balance before re-installation on the mower. Imbalance of blade or bent blades will cause excessive vibration when running, and eventual damage to the mower.

To insure satisfactory operation, it is recommended that before the start of each mowing season, the old blades be discarded and replaced with new blades if worn excessively.

CAUTION: BE SURE TO REMOVE ENGINE SPARK PLUG WIRE OR IGNITION KEY BEFORE ATTEMPTING TO REMOVE OR REPLACE BLADES.

DRIVE CONTROL CABLE ADJUSTMENT

To maintain neutral adjustment, loosen lock nuts (a) on each end of turnbuckles on steering cables. Adjust to neutral and relock nuts.

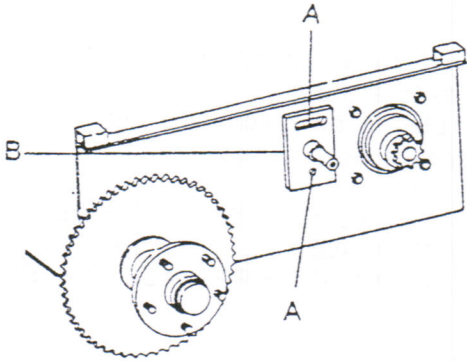


ADJUSTMENTS

PRIMARY & FINAL DRIVE CHAIN ADJUSTMENT

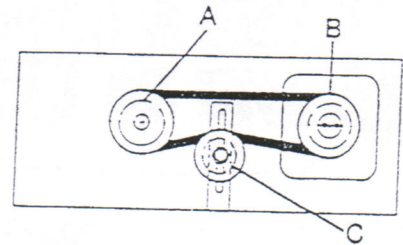
**NOTE: ON SOME MODELS THE SLOT IS AT THE BOTTOM OF SHAFT.

1. Loosen the two carriage bolts (A) on each idler shaft. (B)
2. Slide the idler shaft upward and/or forward or backward until both chains are of equal tension. (For proper chain tension refer to Tractor Maint. section of the owners manual)
3. Tighten carriage bolts securely.



HYDROSTATIC TRANSMISSION DRIVE BELT ADJUSTMENT

The belt tightener for each transmission drive belt is located between the engine pulley (A) and transmission drive pulley (B). Adjustments are made by loosening the idler pulley (C) and sliding up (putting pressure on the belt) to 75 torque inch pounds. NOTE: DAMAGE TO TRANSMISSION WILL RESULT BY HAVING THE BELT TOO TIGHT. THIS PLACES A HEAVY SIDE LOAD ON THE BEARINGS OF THE TRANSMISSION.



FOR DECK DRIVE BELT ADJUSTMENT

Locate the adjusting nuts located on each push arm. Loosen the forward nut (right hand thread) several turns. Then tighten the rear nut enough to bring the belts into proper tension. Remember that each side should be tightened equally. Now reverse the forward nuts until they are tight and lock the adjustment turnbuckle into place.

NOTE: ALL PULLEYS HAVE LOCKTIGHT ON THEM, TO REMOVE PULLEYS HEAT TO 250° F.

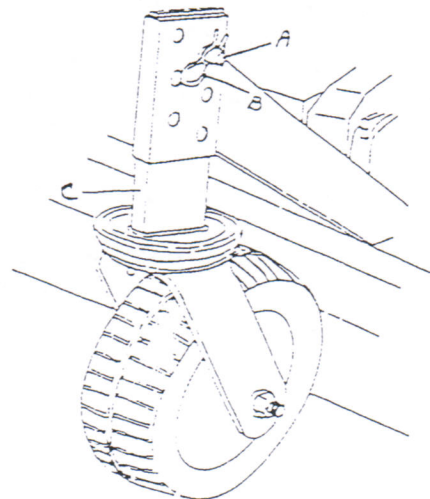
USE CAUTION WITH HEATED PULLEYS

BE SURE TO READ AND FOLLOW ALL SAFETY PRECAUTIONS BEFORE WORKING ON THE MOWER.

ADJUSTING GAUGE WHEELS & REAR ROLLERS

The cutting height of the mower is determined by the position of the gauge wheels and the rear roller bracket on the mower deck. The mower deck is a full floating type and will closely follow the contours of the ground when using the gauge wheels and rear rollers for the height of cut positions.

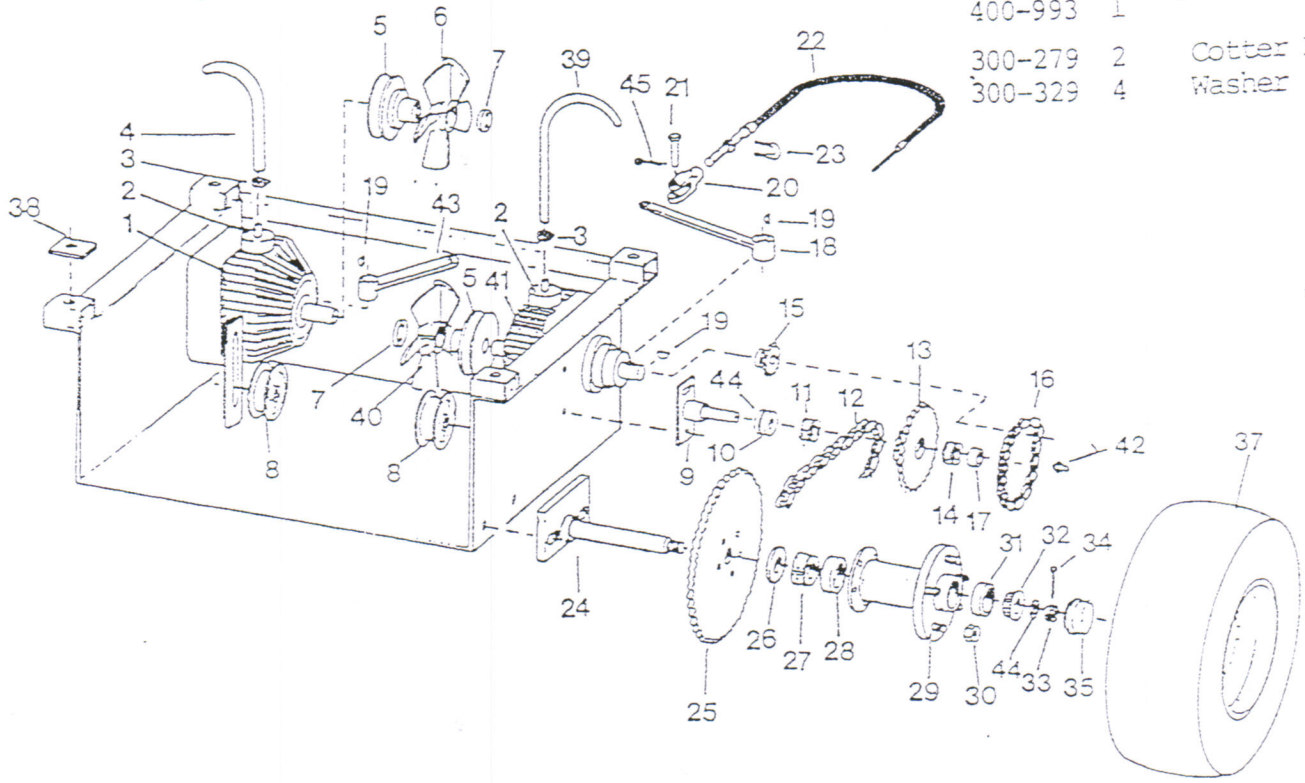
Adjustment is done by removing the gauge pin (A) and clip (B), moving the stem (C) of the front fork or rear roller bracket up or down to the desired height. Be sure to have all four stems in the same adjustment hole. Replace the gauge pin and clip.



1800 SERIES BASE ASSEMBLY

Parts Not Shown

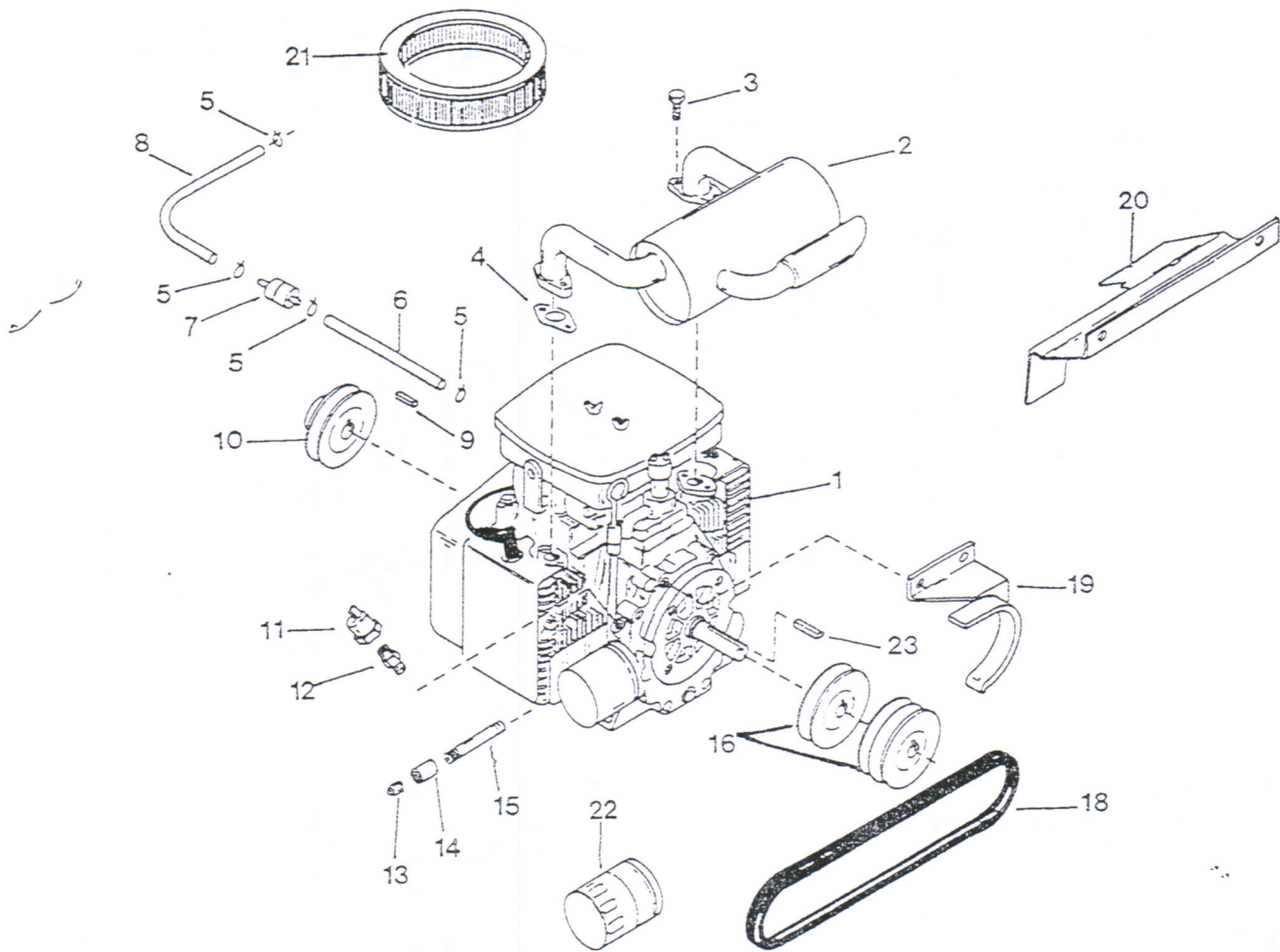
400-989	2	Belt Tensioner Bas
400-990	2	" " " "
400-991	2	" " " Bushin
400-992	1	" " " Spring
400-993	1	" " " Spring
300-279	2	Cotter Key
300-329	4	Washer



REF. NO.	PART NO.	NO. REQ.	DESCRIPTION	REF. NO.	PART NO.	NO. REQ.	DESCRIPTION
1	300-121	1	R.H. Trans. CCW	28	300-227A	4	Drive Wheel Bearing Race
2	400-219	2	Trans. Adapter	29	400-916	2	Drive Wheel Rub
3	400-155	4	Trans. Hose Clamp	30	400-357	10	Drive Wheel Nuts
4	100-317	1	R.H. Trans. Hose	31	300-227A	4	Drive Wheel Bearing Race
5	300-122	2	Trans. Pulley	32	300-227	4	Drive Wheel Bearing
6	300-147	1	R.H. Trans. Fan CCW	33	300-193	2	Castle Nut
7	400-145	2	Trans. Washer	34	300-192	2	Cotter Key
8	400-265	2	Trans. Idler Pulley	35	300-293	2	Dust Cap
9	400-888	2	Bolt on Idler Shaft	37	400-932	2	Drive Wheel & Tire for 40" Deck
10	300-535	2	Thin Idler Shaft Bushing		400-933		Drive Rim Only for 40" Deck
11	300-316	2	5/8" Idler Sprocket Bearing		400-211A		Drive Tire Only for 40" Deck
12	400-208	2	Final Drive Chain				FOR 48, 50 & 60" DECKS
13	300-362	2	Primary Drive Sprocket		400-926	2	Drive Wheel & Tire
14	300-315	2	3/4" Idler Sprocket Bearing		400-927		Drive Wheel Rim Only
15	300-361	2	Trans. Sprocket		400-231A		Drive Tire Only
16	300-363	2	Primary Drive Chain	38	300-357	4	Body Riser
17	300-126	2	Idler Shaft Set Collar	39	100-316	1	L.H. Trans. Hose
18	300-145	1	L.H. Trans. Arm	40	300-123	1	L.H. Trans. Fan CW
19	100-196	6	Transmission Key	41	300-148	1	L.H. Trans. CW
20	100-141	2	Clevis	42	300-212A	2	Zerk
21	100-135	2	Clevis Pins	43	300-124	1	R.H. Trans. Arm
22	100-140	2	Control Cable	44	300-536	4	Washer
23	100-139	2	Steering Cable Clamp	45	100-136	2	Cotter Key
24	300-228	2	Drive Wheel Axle	*	300-358	1	Pusharm Stop
25	300-269	2	Final Drive Sprocket				
26	400-244	2	Drive Wheel Oil Seal				
27	300-227	4	Drive Wheel Bearing				

* Not Shown **See above**

KOHLER ENGINE ASSEMBLY

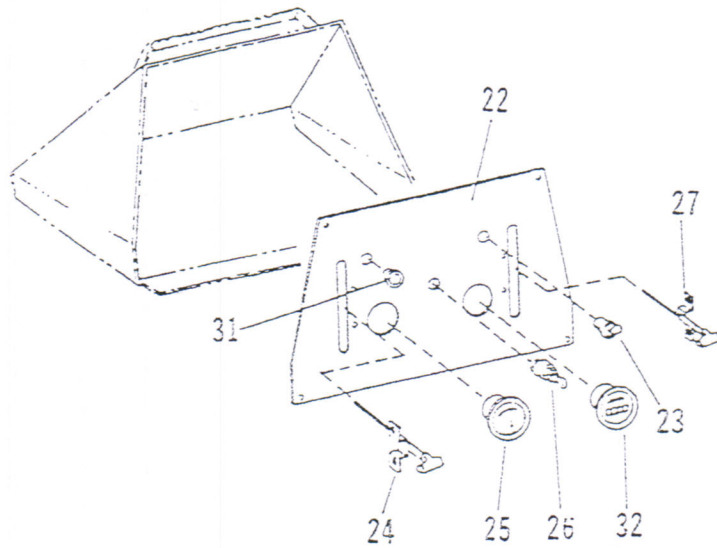


REF. NO.	PART NO.	NO. REQ.	DESCRIPTION
1	400-506	1	18 H.P. Kohler Engine
2	400-915	1	Muffler & Manifold
3	300-530	4	Exhaust Bolts
4	5204114	2	Exhaust Gaskets
5	400-155	4	Hose Clamps
6	100-269	1	Gas Hose (9")
7	400-249	1	Gas Filter
8	100-268	1	Gas Hose (16")
9	300-284	1	Key
10	400-299	1	R.H. Engine Pulley
11	100-133	1	Oil Sending Unit
12	5215805	1	Pipe Adapter
13	400-140	1	Pipe Plug
14	400-139	1	Pipe Coupling
15	400-138	1	Pipe Nipple
16	400-957	1	L.H. Engine Pulley
18	100-293	2	Transmission Belt

REF. NO.	PART NO.	NO. REQ.	DESCRIPTION
19	400-891	1	Belt Cup
20	400-893	1	Exhaust Shield
21	4708301	1	Air Filter
22	5205002	1	Oil Filter
23	300-287	1	Key
*	5208301	1	Air Filter Precleaner

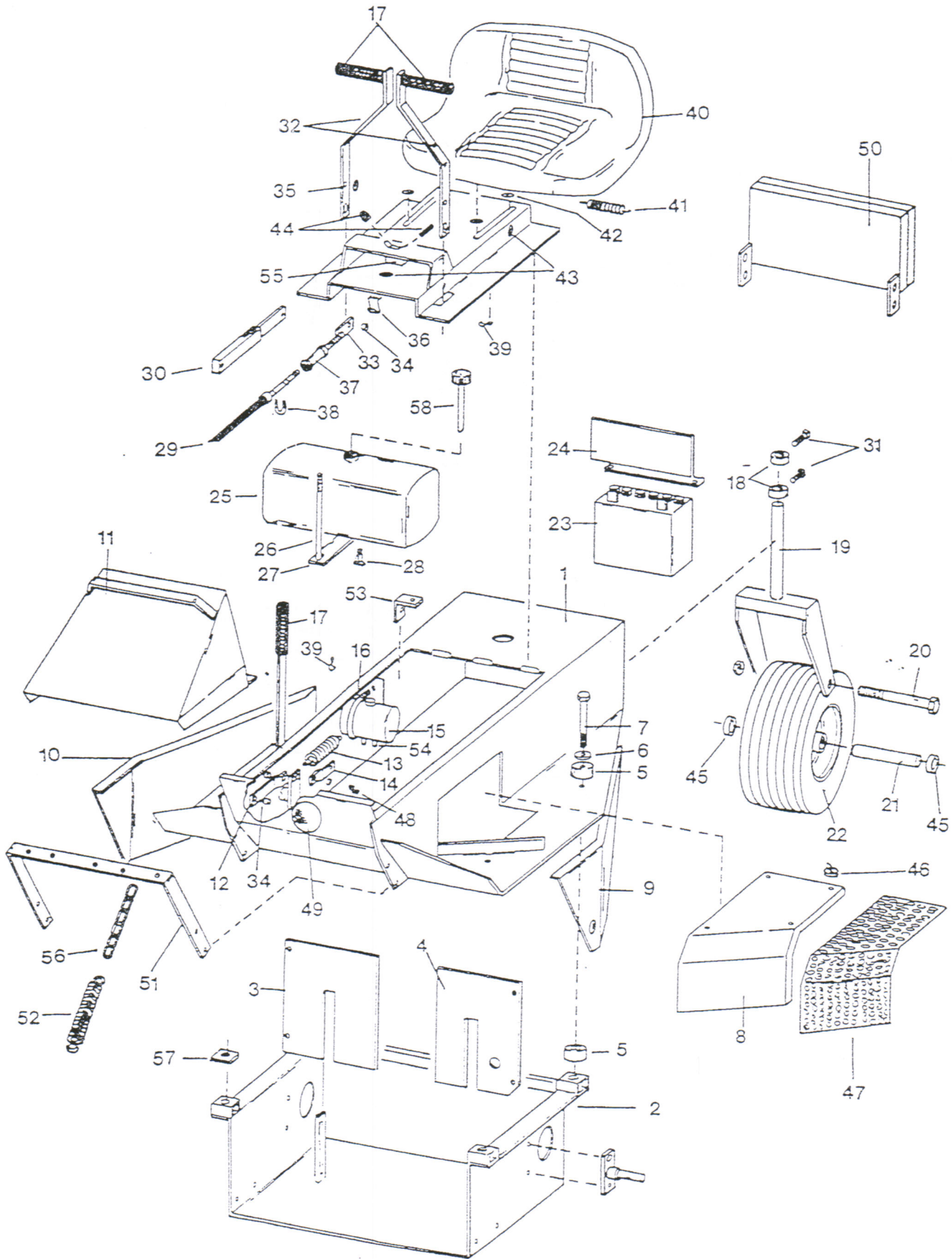
* Not Shown

KOHLER DASH ASSEMBLY



REF. NO.	PART NO.	NO. REQ.	DESCRIPTION
22	100-218	1	Dash Panel
23	100-118	1	Light Switch
24	300-161	1	Choke Cable
25	100-112	1	Ammeter
26	100-113	1	Ignition Switch
27	400-892	1	Throttle Cable
31	100-125	1	Oil Pressure Light
32	100-122	1	Hourmeter

BODY ASSEMBLY

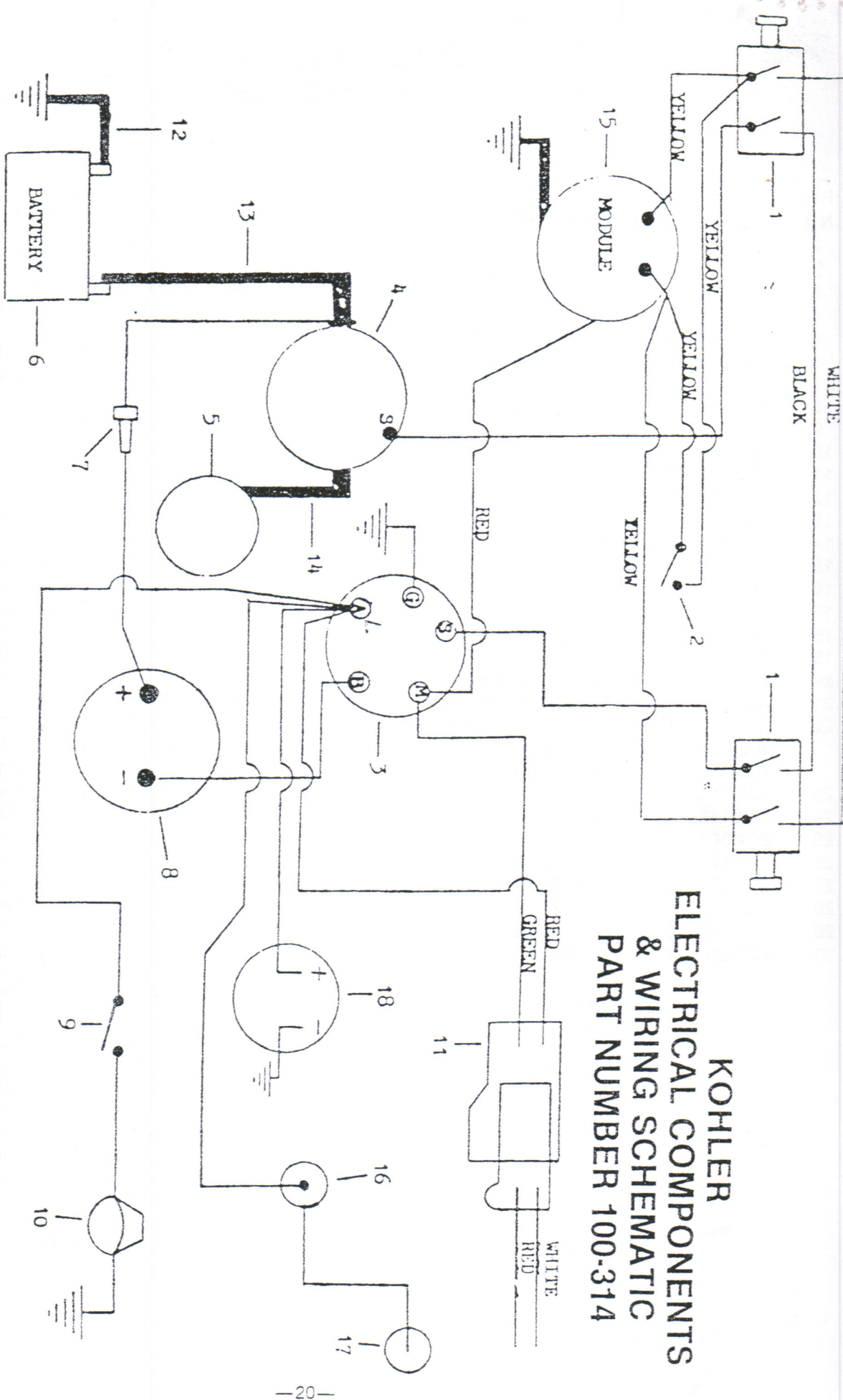


BODY ASSEMBLY PARTS LIST

REF. NO.	PART NO.	NO. REQ.	DESCRIPTION	REF. NO.	PARTS NO.	NO. REQ.	DESCRIPTION
1	300-100	1	Body	32	300-107	2	Steering Lever
2	100-281	1	Motor Frame	33	400-136	2	Steering Cable Arm
3	400-894	1	Compartment Divider (R/H)	34	300-153	6	Bushing
4	400-895	1	Compartment Divider (L/H)	35	300-329	2	Steering Lever Machine Washer
5	300-143	8	Rubber Body Mounts	36	100-239	1	Lid Latch Spring
6	300-311	4	Body Bolt Washer	37	400-352	2	Steering Cable Threaded Barrel
7	300-310	4	Body Bolt	38	100-139	2	Steering Lever Clamp
8	100-206	1	Muffler Guard	39	100-117	2	Wiring Harness Clamp
9	300-111	1	Left Hand Body Skirt	40	100-116	1	Seat
10	300-101	1	Right Hand Body Skirt	41	400-153	1	Lever Lock Spring
11	100-217	1	Dash Hood	42	400-461	4	Nylon Seat Washer
12	300-312	1	Deck Lift Linkage	43	100-295	1	Small Rubber Grommet
13	100-123	1	Spring	44	100-215	2	Lever Lock Knob Rubber Cap
14	400-941	1	Deck Lift Linkage	45	400-242	2	Tail Wheel Sinter Bearing (outside)
15	300-102	1	Hydro Reservoir		400-361	2	Tail Wheel Roller Bearing (inside)
16	300-103	1	Hydro Reservoir Clamp	46	400-314	6	Heat Shield Spacer
17	100-114	4	Handle Grips	47	400-315	1	Heat Shield
18	400-137	2	Shaft Collar	48	300-116	1	PR Right and Left Head Light Retainer
19	100-219	1	Tail Wheel Fork	49	100-110	1	Head Light
20	400-132	1	Tail Wheel Axle	50	400-126	1	Weight Bar
21	400-300	1	Tail Wheel Spacer	51	400-316	1	Spring Hanger
22	300-222	1	Tail Wheel & Tire Assembly	52			See Deck Parts List
	400-214		Tail Wheel Rim	53	400-940	1	Deck Lift Spring Anchor
	400-213A		Tail Wheel Tire	54	400-116	2	Reservoir Connector
23	100-111	1	Battery	55	400-278	1	D.P.S.T. Switch
24	300-142	1	Battery Hold Down Strap	56	100-228	2	6 Link Spring Chain On Model 1840, 1850, & 1860
25	300-370	1	Fuel Tank			3	1860
26	300-424	2	Battery Bracket Bolt	57	300-357	4	Spacer
27	300-371	2	Fuel Tank Bracket	58	300-374	1	Gas Cap w/Gauge
28	400-115	1	Fuel Valve	**	400-129	2	Tail Wheel Collar Set Screw
29	100-140	2	Control Cable	**	400-121	2	Steering Lever Spring Washer
30	400-238	1	Lid Prop	**	300-435	8	Nut Clip
				**	100-277	1	Lid Latch Washer

** THESE ITEMS ARE NOT PICTURED

KOHLER ELECTRICAL COMPONENTS & WIRING SCHEMATIC PART NUMBER 100-314



REF. NO.	PART NO.	DESCRIPTION
1	400-278	D.P.S.T. Switch
2	400-292	Seat Sensor Switch
3	100-113	Ign. Switch (Cole Hersee)
4	400-270	Starter Solenoid
5	5209803	Electric Starter
6	100-111	Battery

REF. NO.	PART NO.	DESCRIPTION
7	400-289	20 Amp Fuse
8	100-112	Ammeter
9	100-118	Light Switch
10	100-110	Heat Light
11	400-550	Connector Plug
12	100-108	13" Cable

REF. NO.	PART NO.	DESCRIPTION
13	400-304	48" Battery Cable
14	400-307	Battery Cable
15	400-897	Ign. Cut Off Module
16	100-125	Oil Light
17	100-133	Oil Pressure Send.
18	100-122	Hourmeter